



**Steamboat Springs Board of Realtors, Inc.**



## **Routt County and Steamboat Springs 2002 Subdivision Plat Maps**

**The Sanctuary □  
Filing 2**

**P.O. Box 775103 • 625 South Lincoln Ave., #202**

**Steamboat Springs, Colorado 80477**

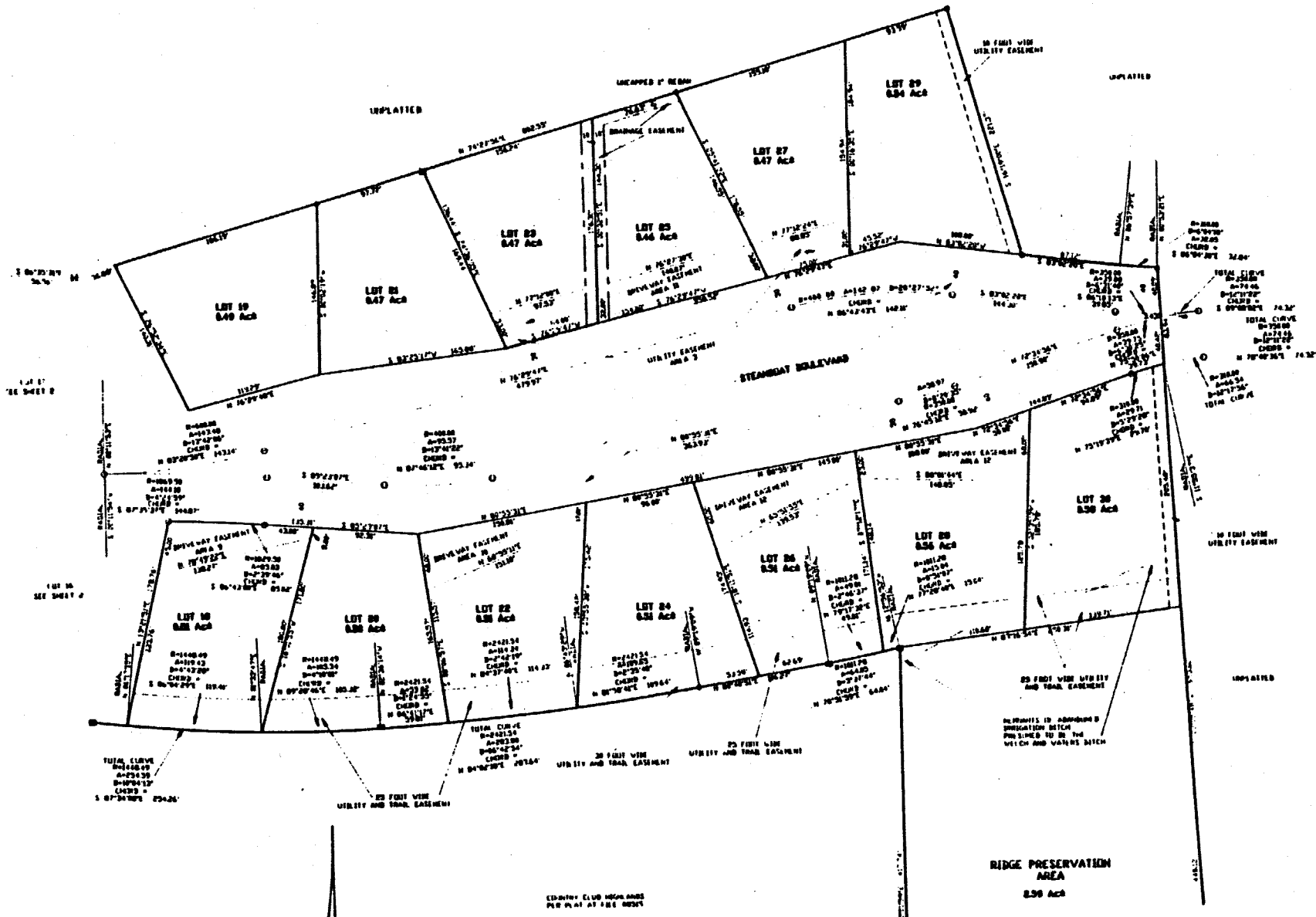
**Office: 970.879.4663 • Fax: 970.879.1031**

**[www.ssbr.org](http://www.ssbr.org)**

*Disclaimer: The Plat Maps contained herein are deemed reliable but not guaranteed. The Steamboat Springs Board of Realtors, individual real estate companies and their agents make no representation as to their accuracy or completeness. The Plats have been altered and abbreviated for Realtors and their client use as an aid in real estate sales. Some Plat Maps or Re-Plats may have been omitted. The original and complete Plats may be obtained from Routt County.*

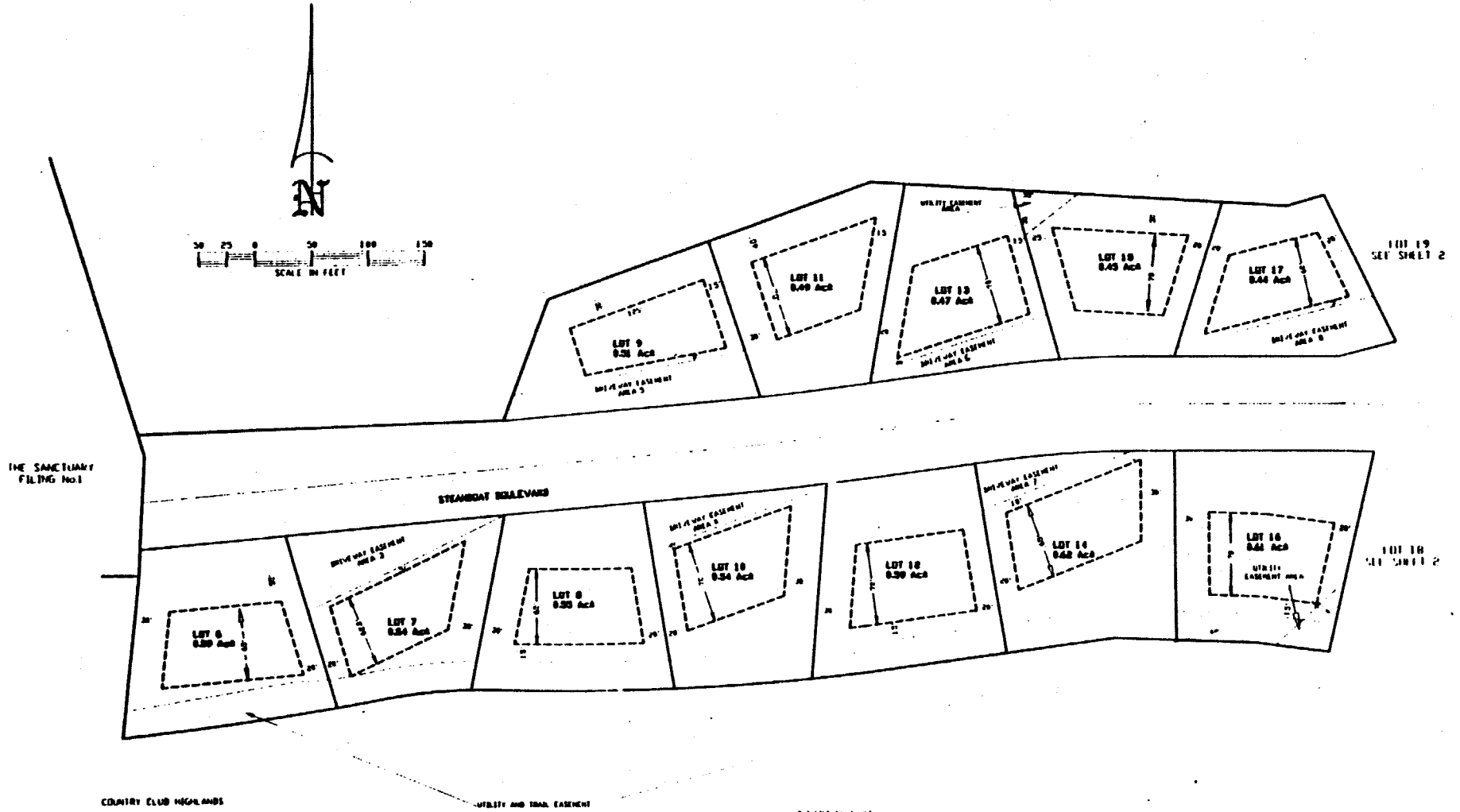
# THE SANCTUARY - FILING NO. 2

## 3 OF 5



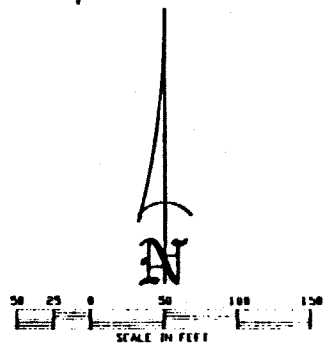
# THE SANCTUARY - FILING NO. 2

## 4 OF 5

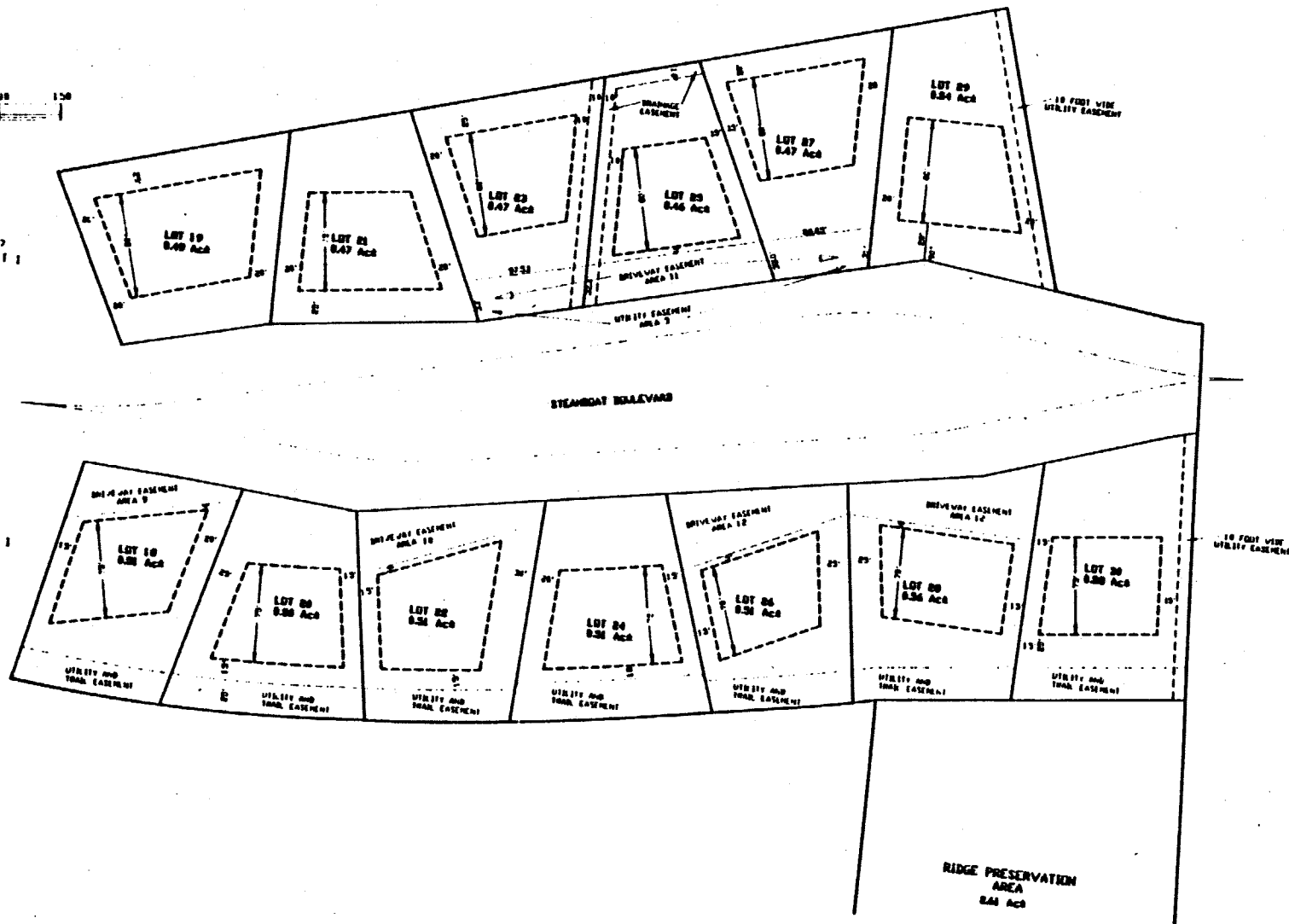


# THE SANCTUARY - FILING NO. 2

## 5 OF 5



LOT 17  
SEE SHEET 1



LOT 16  
SEE SHEET 1

RIDGE PRESERVATION  
AREA  
0.41 Ac

# THE SANCTUARY - FILING NO. 2

## 2 OF 5

